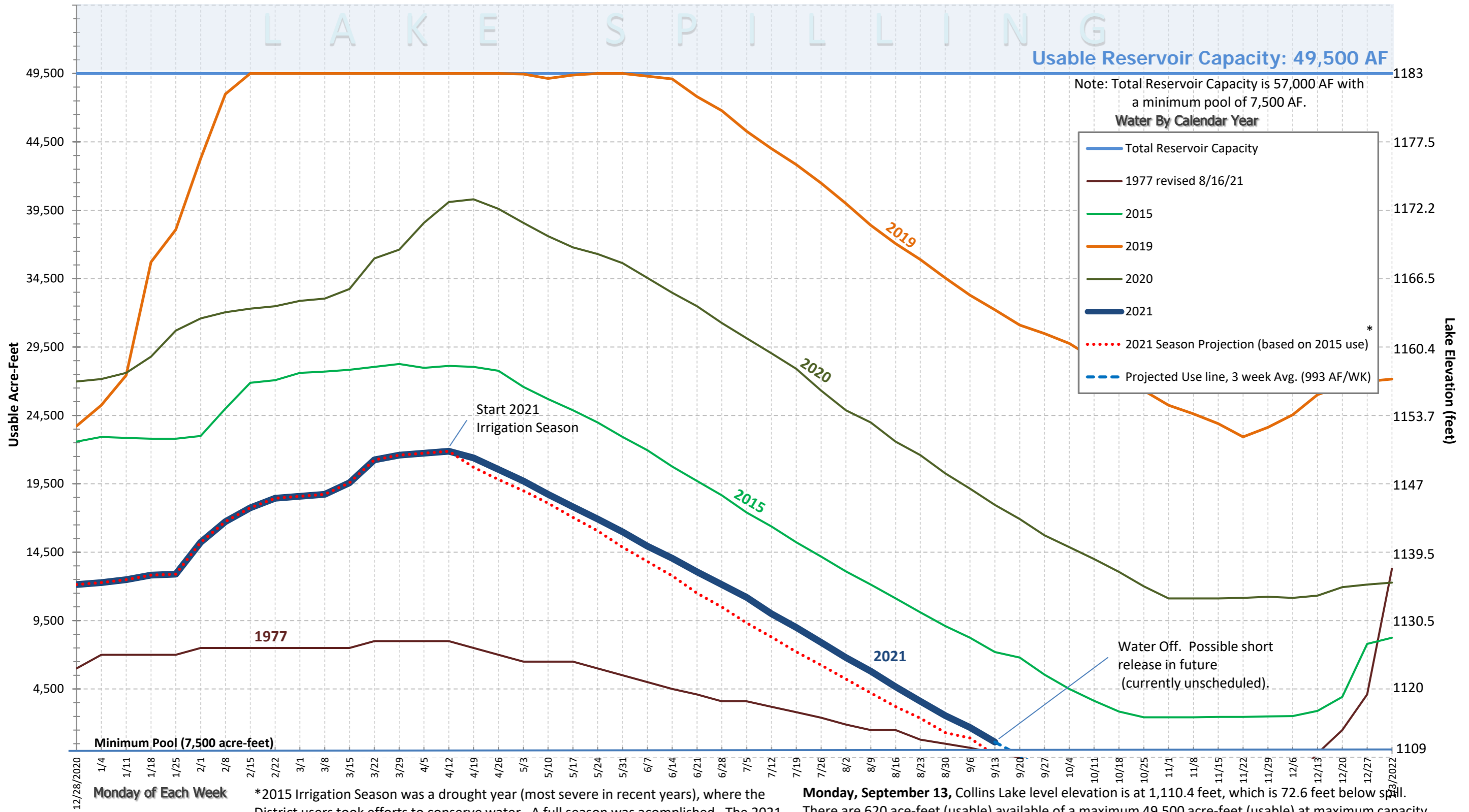


September 13, 2021

# Collins Lake Usable Water (acre-feet)



\*2015 Irrigation Season was a drought year (most severe in recent years), where the District users took efforts to conserve water. A full season was accomplished. The 2021 projection line simulates the 2021 Irrigation Season with 2015 level savings.

**Monday, September 13,** Collins Lake level elevation is at 1,110.4 feet, which is 72.6 feet below spill. There are 620 ace-feet (usable) available of a maximum 49,500 acre-feet (usable) at maximum capacity, making the current lake level 1.25% of usable capacity.